

Beefleaf Zine: the Webweaving Outtakes Moodboard

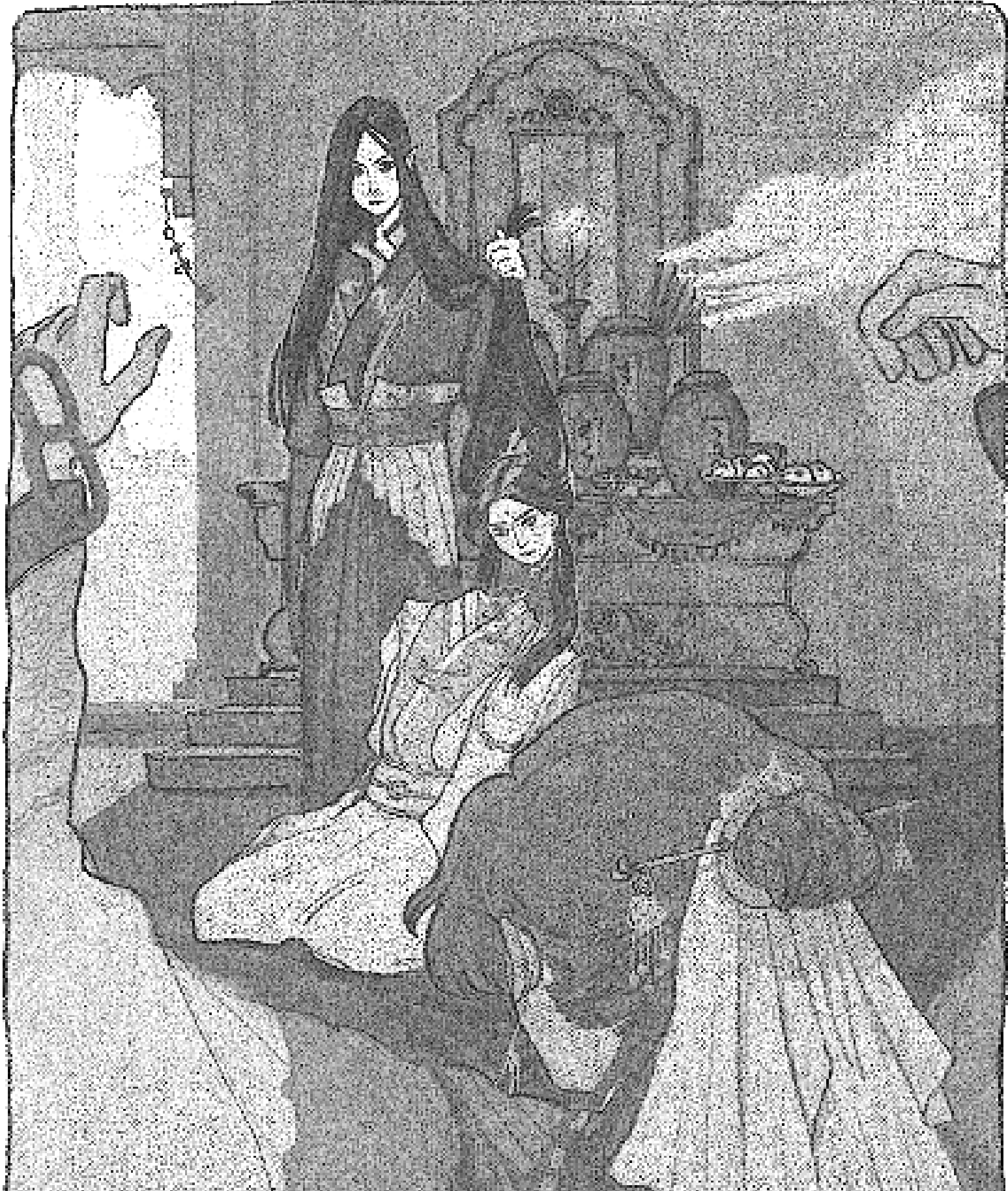


**I am the
wound that
never heals**



**I am the dull
blade he twists
inside himself**





teamstewy

In another life I would've really liked just doing coke with you in a public bathroom



When Freud, for example, asserts the child's great need for the father's protection, telling us that it ousts "the oceanic feeling," what could this feeling refer to but the bond to the mother?[†] Freud then admits his discomfort with the ecstasy of oneness, with primordial states—in short, with the irrational; his preference is for the Apollonian world of dry land, and he quotes Schiller's diver: "Let him rejoice who breathes up here in the roseate light."¹⁵ Likewise, when Lasch links together the absence of the father, the dependence on the mother, and the "persistence of archaic fantasies," he implies that without paternal intervention the image of the "primitive mother" necessarily overwhelms the child.¹⁶ In other theories, as we shall see, the contrast between a primitive / narcissistic mother and a civilized / oedipal father is explicitly stated



fudrilshi
@fudrilshi

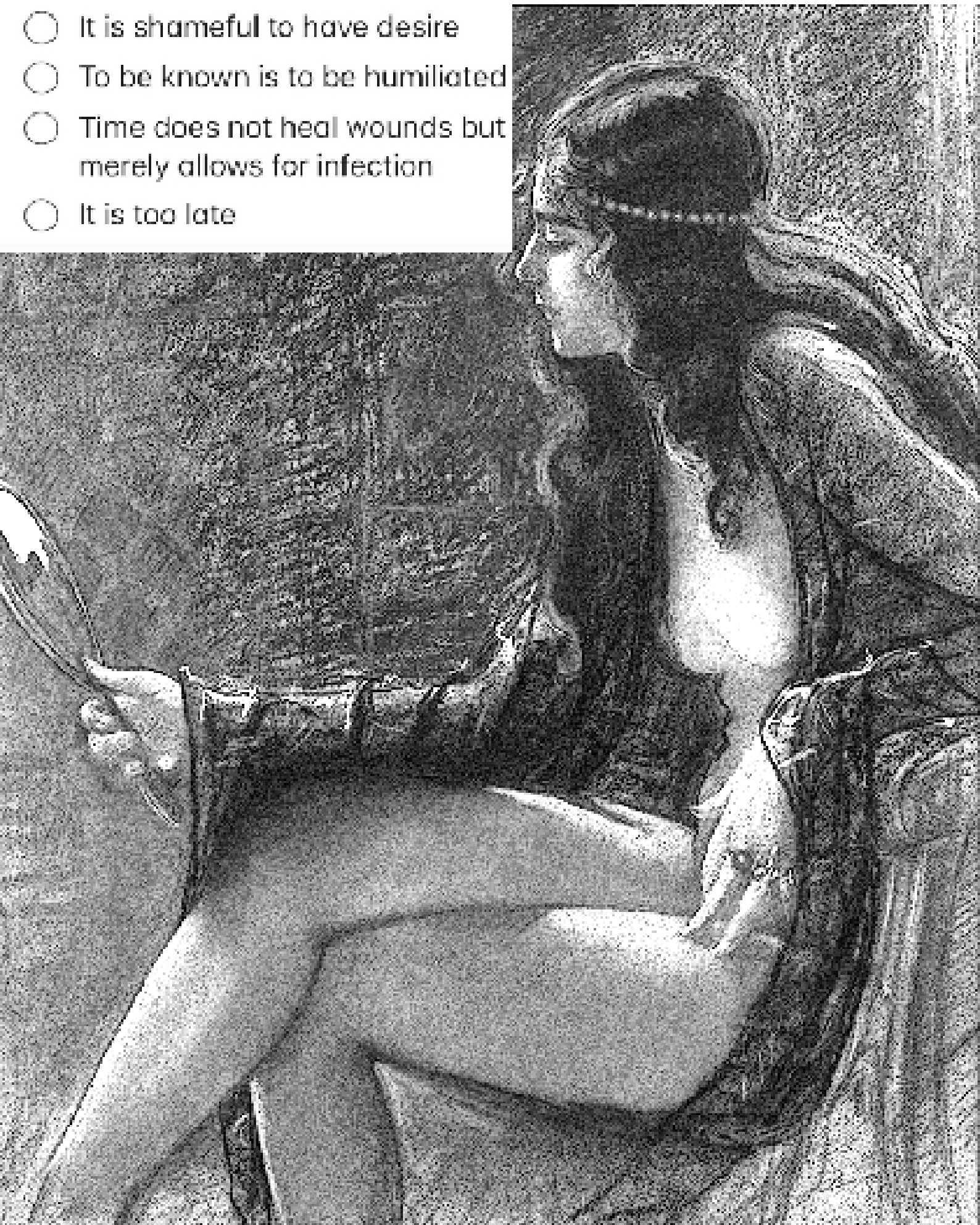
my fave BL depict trauma Maturely ,
whereas your BL is a day at the circus when
it comes to the pain of gays

18:32 · 11 Dec 24 · 1,369 Views



Daily Affirmations

- It is shameful to have desire
- To be known is to be humiliated
- Time does not heal wounds but merely allows for infection
- It is too late



girlhood is a spectrum



List of Illustrations

Page 1: illustration by Yaroslava Murashko, TGCF Russian edition (2023)

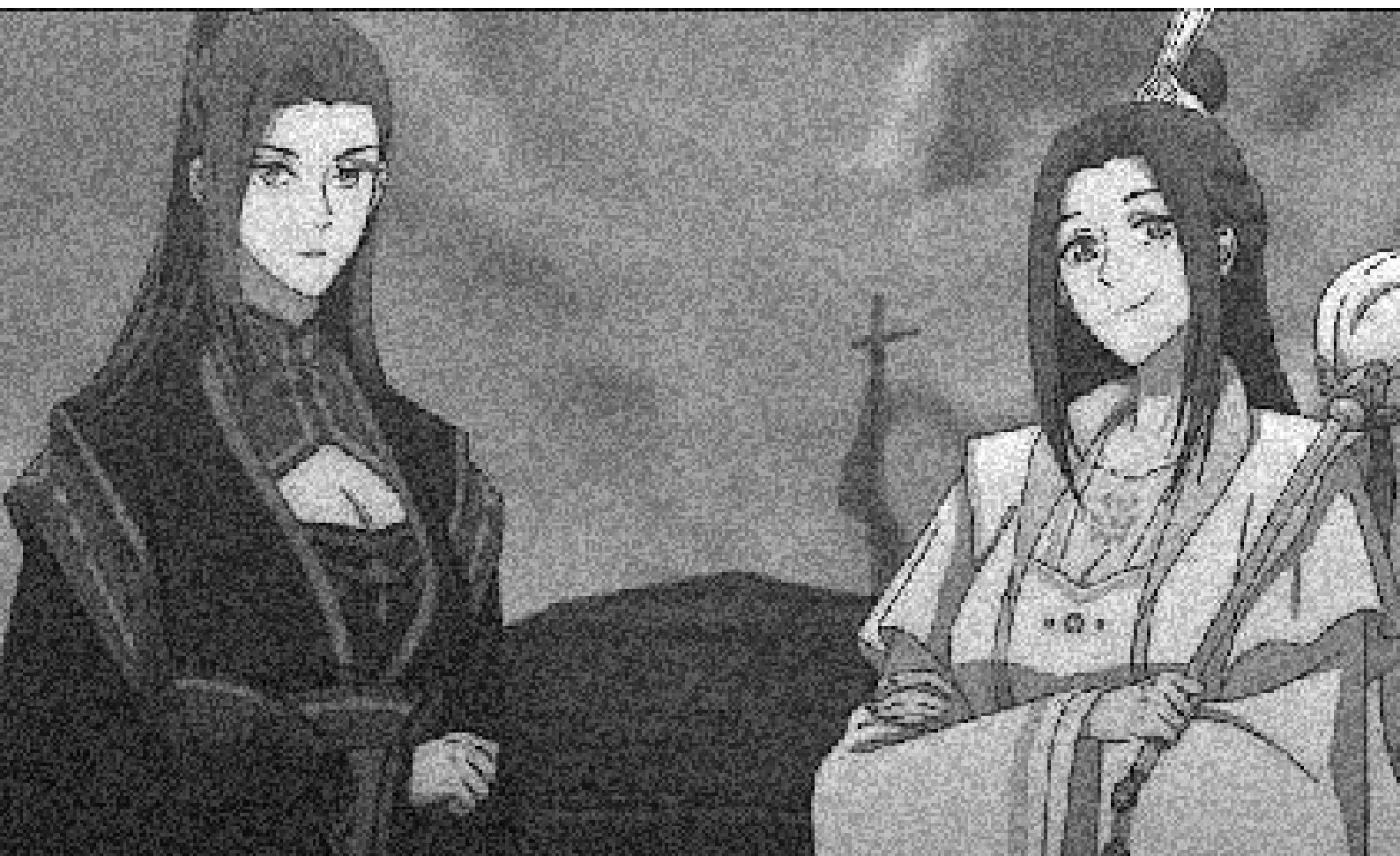
Page 2: illustration, TGCF audio drama (2024)

Page 3: top right, illustration by Hans Fronius, *The Fall of the House of Usher* (1965); bottom left, illustration by Ben Stahl, *The Haunting of Hill House* (1960)

Page 4: *Mirror Eye* (c.1926), Mihri Müşfik Hanım

Page 5: promo art for TGCF donghua (2024)

Page 6 (below): still from TGCF donghua (2020) <3 :)





serethereal Follow

whatever cunt is made of, her and mine are the same